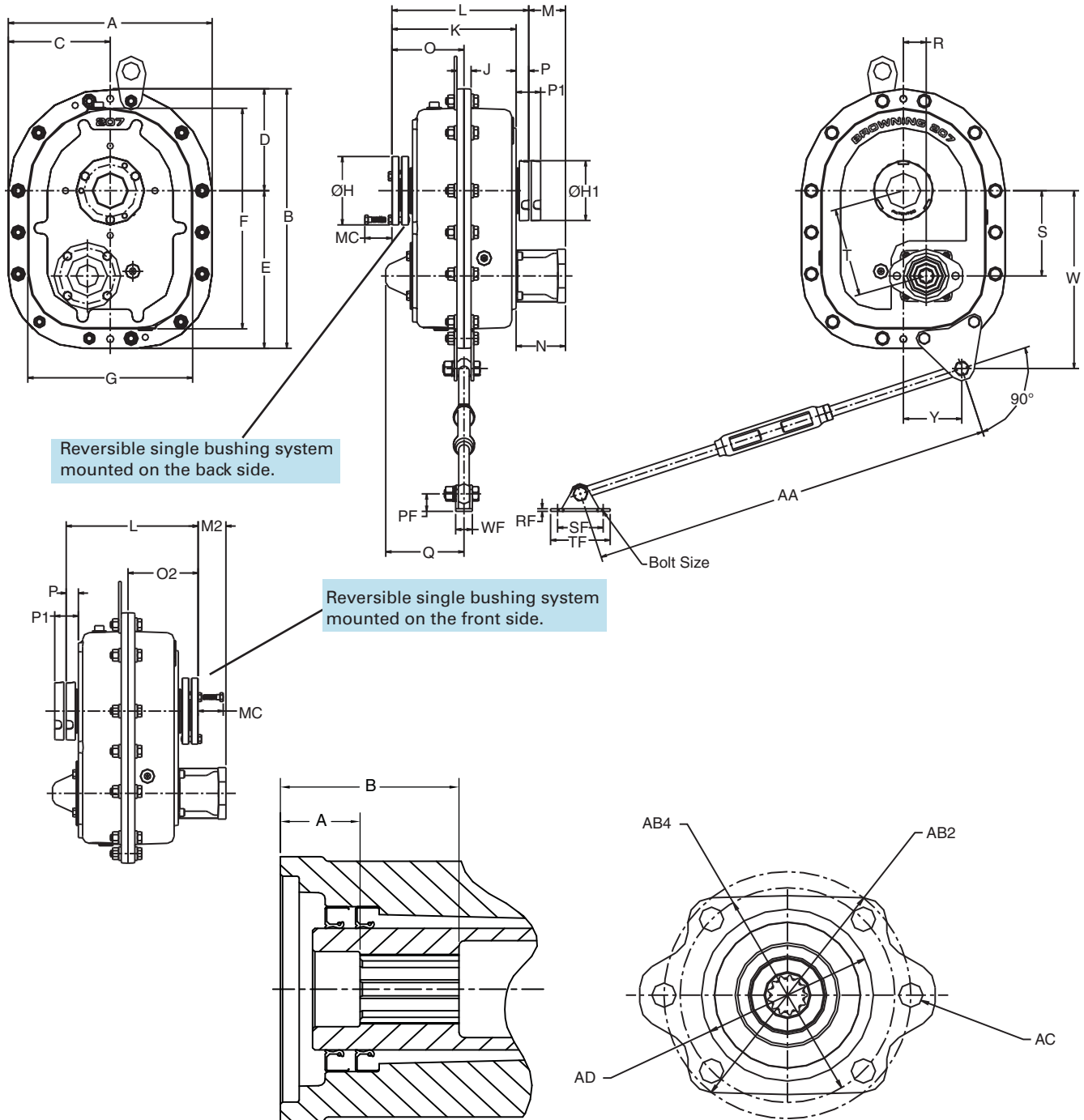


HMTP TorqTaper Plus® Unit Sizes 107-315



UNIT NO.	HYDRAULIC MOTOR MOUNTING STYLES							
	6B		9T		13T		14T	
	A	B	A	B	A	B	A	B
107	1.03	2.38	0.64	1.89	-	-	-	-
115	1.01	2.36	0.62	1.87	1.28	2.15	-	-
203	1.06	2.37	0.73	1.98	1.12	1.93	1.40	2.92
207	1.10	2.41	-	-	1.16	1.97	1.39	2.91
215	1.02	2.39	-	-	0.91	2.10	1.43	2.94
307	1.06	2.43	-	-	-	-	1.47	2.98
315	1.13	2.50	-	-	-	-	1.54	3.05



Shaft Mount Reducers



HMTP TorqTaper Plus® Shaft Mounted Speed Reducers Unit Sizes 107-315

PART NO.	DIMENSIONS IN INCHES																	
	A	B	C	D	E	F	G	H	H1	J	K	L	MC	O	O2	P	P1	PF
107HMTP	9.76	12.07	4.88	4.88	7.19	10.07	7.75	3.25	3.00	0.63	5.52	7.89	1.75	4.25	4.21	0.90	1.84	1.14
115HMTP	11.00	14.08	5.50	5.50	8.58	11.78	8.69	4.13	3.50	0.75	5.99	8.36	1.88	4.48	4.45	0.90	1.83	1.14
203HMTP	12.88	16.16	6.44	6.44	9.72	13.66	10.38	4.50	3.75	0.87	7.07	9.43	1.88	5.01	4.99	0.89	1.83	1.32
207HMTP	14.50	16.47	7.25	7.25	11.22	15.73	11.76	4.88	4.25	1.01	7.39	9.75	1.88	5.14	5.19	0.89	1.86	1.51
215HMTP	16.25	20.88	8.13	8.13	12.76	18.07	13.44	5.31	4.75	1.07	8.24	10.85	1.88	5.89	5.74	1.02	1.96	1.51
307HMTP	19.04	24.37	9.52	9.52	14.85	21.00	15.67	6.44	5.69	1.25	9.27	12.57	2.25	6.58	6.61	1.36	2.75	1.81
315HMTP	19.90	26.35	9.95	9.95	16.40	23.02	16.57	7.13	6.70	1.25	10.51	14.50	2.75	7.51	7.61	1.73	3.25	2.22

PART NO.	DIMENSIONS IN INCHES													BOLT SIZE	MAX. OUTPUT BORE	WT. LBS.
	Q	R	RF	S	SF	T	TF	W	WF	Y	AA					
											MIN.	MAX.				
107HMTP	4.24	1.18	0.36	3.77	2.50	3.95	3.38	7.88	1.44	2.73	24.00	30.00	3/8	1 7/16	58	
115HMTP	4.51	1.35	0.36	4.36	2.50	4.56	3.38	9.14	1.44	3.12	24.00	30.00	3/8	1 15/16	79	
203HMTP	5.04	1.48	0.42	5.26	2.50	5.46	3.50	10.94	1.72	3.64	24.00	30.00	3/8	2 3/16	120	
207HMTP	5.57	1.63	0.48	6.08	3.00	6.29	4.25	12.68	2.19	4.16	27.00	33.00	7/16	2 7/16	162	
215HMTP	6.24	2.12	0.48	7.01	3.00	7.32	4.25	14.19	2.19	4.65	27.00	33.00	7/16	2 15/16	234	
307HMTP	6.79	2.25	0.61	7.78	4.00	8.10	5.38	17.00	2.78	5.58	29.00	35.00	1/2	3 7/16	365	
315HMTP	8.05	2.63	0.72	8.53	4.75	8.93	6.50	18.12	3.63	6.20	29.50	35.50	5/8	3 15/16	473	

PART NO.	DIMENSIONS IN INCHES								SPLINE DATA ★		
	M	M2	N	AB2	AB4	AC	AD	NT	DP	OD	
107HMTP 6B SAE-A2	2.18	1.60	3.08	4.19	-	0.50	3.25	6	-	1.00	
107HMTP 9T SAE-A2	2.18	1.60	3.08	4.19	-	0.38	3.25	9	16/32	.609	
107HMTP 13T SAE-B2	2.66	2.08	3.56	5.75	5.00	0.50	4.00	13	16/32	.875	
115HMTP 6B SAE-A2	2.18	1.60	3.08	4.19	-	0.50	3.25	6	-	1.00	
115HMTP 9T SAE-A2	2.18	1.60	3.08	4.19	-	0.38	3.25	9	16/32	.609	
115HMTP 13T SAE-B2	2.66	2.08	3.56	5.75	5.00	0.50	4.00	13	16/32	.875	
203HMTP 6B SAE-A2	2.68	2.14	3.58	4.19	-	0.50	3.25	6	-	1.00	
203HMTP 9T SAE-A2	2.68	2.14	3.58	4.19	-	0.38	3.25	9	16/32	.609	
203HMTP 13T SAE-B2	2.87	2.33	3.77	5.75	5.00	0.50	4.00	13	16/32	.875	
203HMTP 14T SAE-C4	3.18	2.64	4.08	6.38	-	0.50	5.00	14	12/24	1.234	
207HMTP 6B SAE-A2	2.62	2.07	3.52	4.19	-	0.50	3.25	6	-	1.00	
207HMTP 13T SAE-B2	2.81	2.26	3.71	5.75	5.00	0.50	4.00	13	16/32	.875	
207HMTP 14T SAE-C4	3.12	2.57	4.02	6.38	-	0.50	5.00	14	12/24	1.234	
215HMTP 6B SAE-A2	2.69	2.12	3.72	4.19	-	0.50	3.25	6	-	1.00	
215HMTP 13T SAE-B2	2.68	2.11	3.71	5.75	5.00	0.50	4.00	13	16/32	.875	
215HMTP 14T SAE-C4	3.24	2.67	4.27	6.38	-	0.50	5.00	14	12/24	1.234	
307HMTP 6B SAE-A2	2.29	1.67	3.65	4.19	-	0.50	3.25	6	-	1.00	
307HMTP 14T SAE-C4	2.84	2.22	4.20	6.38	-	0.50	5.00	14	12/24	1.234	
315HMTP 6B SAE-A2	1.92	1.29	3.65	4.19	-	0.50	3.25	6	-	1.00	
315HMTP 14T SAE-C4	2.47	1.84	4.20	6.38	-	0.50	5.00	14	12/24	1.234	

★ NT - Number of spline teeth.
 DP - Involute spline diametral pitch.
 OD - Internal spline major outside diameter.

Part Number Explanation

